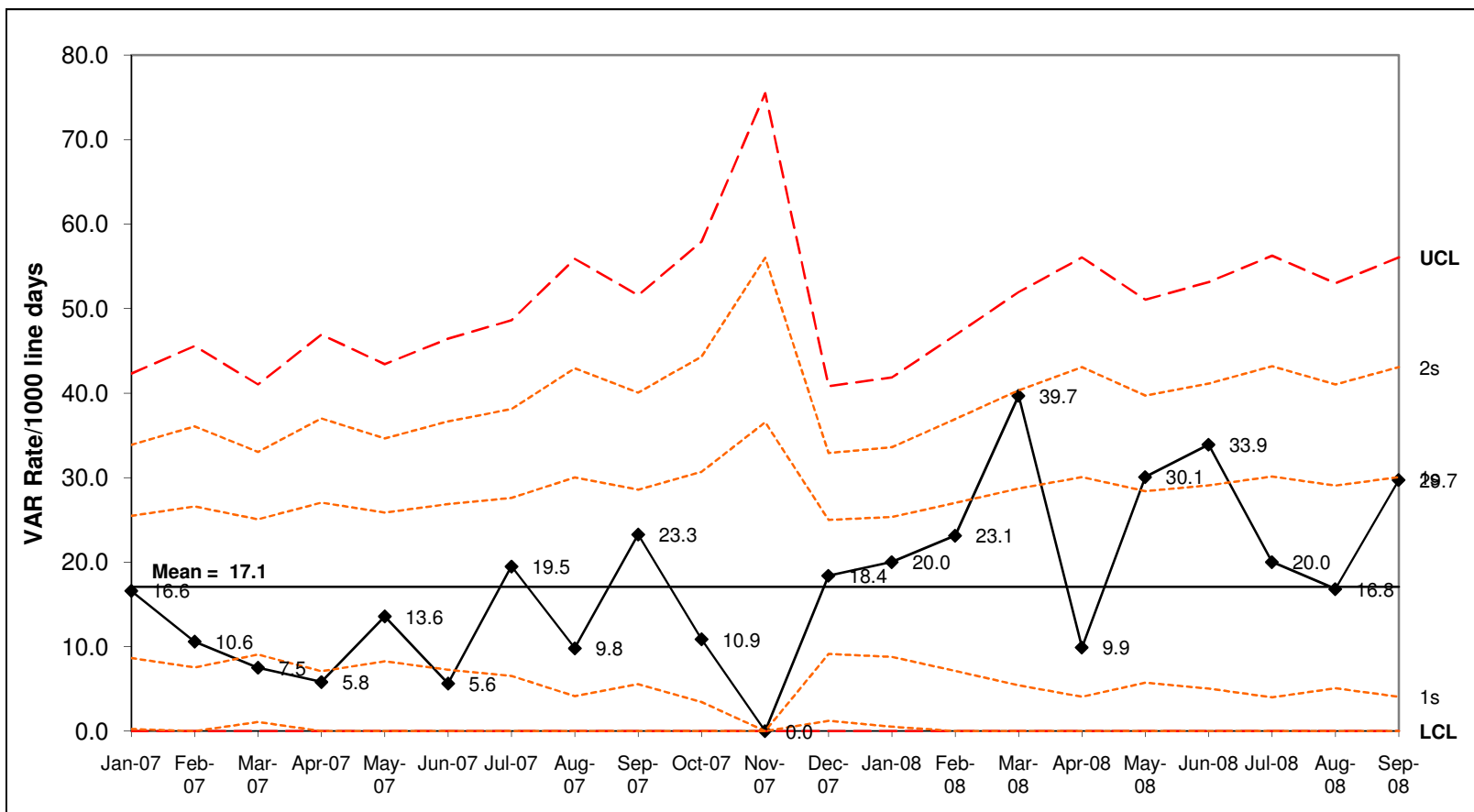


VAR rate per 1000 ventilator days Dell Children's Medical Center



Month	VAR/Days
Jan-07	4 / 241
Feb-07	2 / 189
Mar-07	2 / 267
Apr-07	1 / 172
May-07	3 / 221
Jun-07	1 / 178
Jul-07	3 / 154
Aug-07	1 / 102
Sep-07	3 / 129
Oct-07	1 / 92
Nov-07	0 / 45
Dec-07	5 / 272
Jan-08	5 / 250
Feb-08	4 / 173
Mar-08	5 / 126
Apr-08	1 / 101
May-08	4 / 133
Jun-08	4 / 118
Jul-08	2 / 100
Aug-08	2 / 119
Sep-08	3 / 101